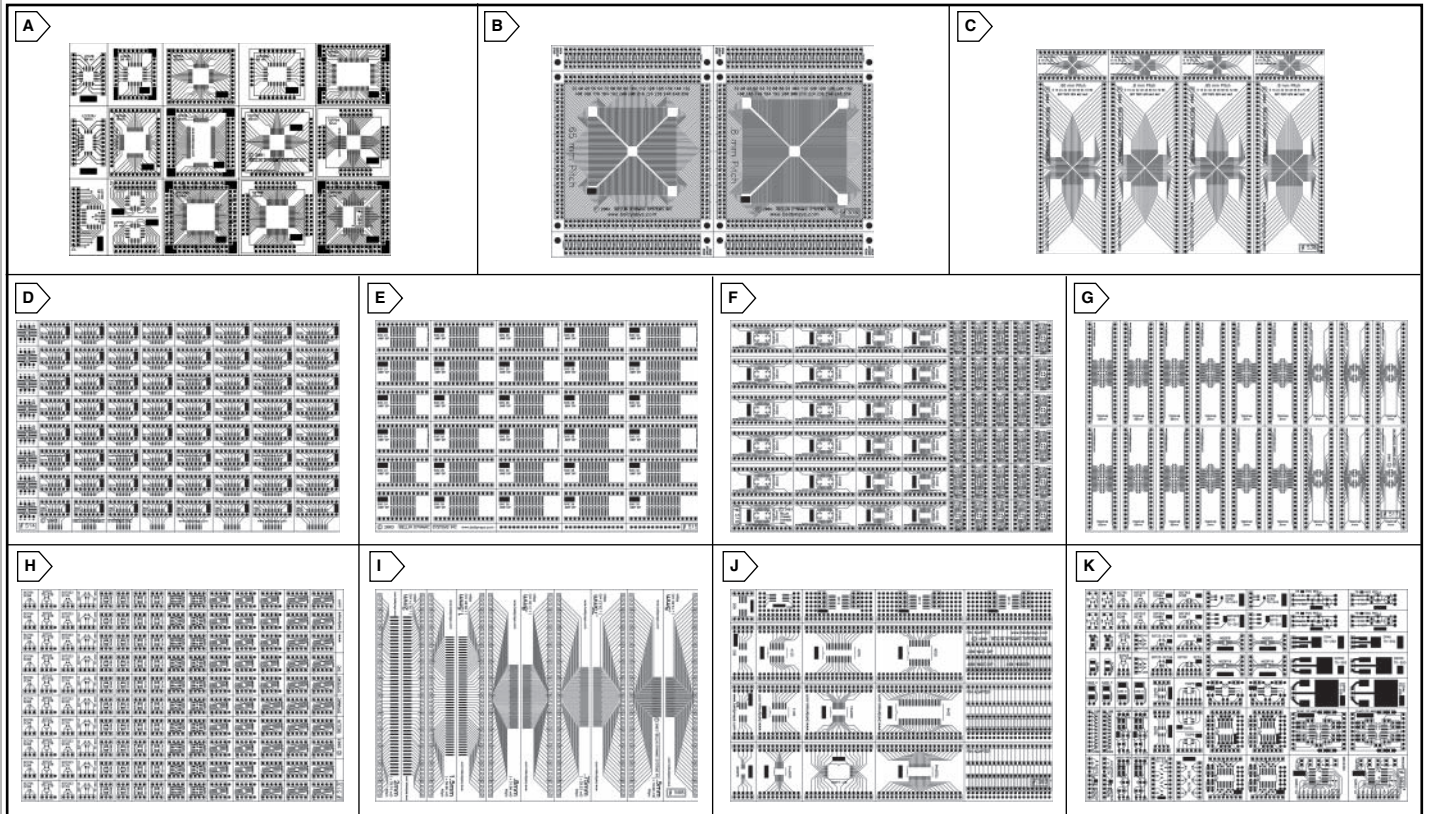


BELLIN SMT Prototyping Adapters

BELLIN DYNAMIC SYSTEMS INC

BELLIN DYNAMIC SYSTEMS SMT ADAPTER BOARDS

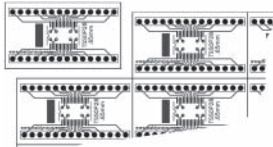


Specifications:

- Board thickness: .031"
- Thru-hole spacing: .100", hole diameter .050"

Full scale data sheets available at mouser.com/bellin

Grooved Snap-Apart™ boards adapt surface mount IC's to .100" spacing thru-hole pads.



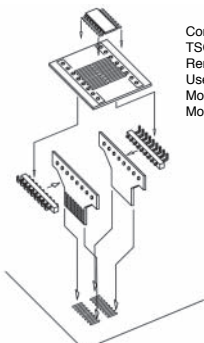
MOUSER STOCK NO.	Bellin Dynamic Part No.	Fig.	Description	No. of Adapters	Price Each	
					1	10
853-B504	B504	A	QFP 32 44 48 52 54 64 70 80 100, PLCC 18 20 28 32 44	15	45.95	41.50
853-B518	B518	B	QFP 32 pin, 40, 48... (by 8's) to 256, .65 or .8mm pin pitch	2	45.95	41.50
853-B519	B519	B	QFP 32 pin, 40, 48... (by 8's) to 256, .4 or .5mm pin pitch	2	45.95	41.50
853-B530	B530	C	QFP/MLF: 8 pin, 16, 24... (by 8's) to 80p, .65 or .8mm pin pitch	8	43.65	41.45
853-B531	B531	C	QFP/MLF: 4 pin, 12, 20... (by 8's) to 76p, .65 or .8mm pin pitch	8	43.65	41.45
853-B532	B532	C	QFP/MLF: 8 pin, 16, 24... (by 8's) to 80p, .4 or .5mm pin pitch	8	43.65	41.45
853-B533	B533	C	QFP/MLF: 4 pin, 12, 20... (by 8's) to 76p, .4 or .5mm pin pitch	8	43.65	41.45
853-B514	B514	D	SOIC 8, 14, 16, 18, 20 to DIP .300" width	72	45.95	41.50
853-B515	B515	E	SOIC 24, 28, 32 to DIP .600" width	30	45.95	41.50
853-B505	B505	F	SOIC 8, 14, 16, 20, 24, 32, 40 pin patterns for prototyping, 60 patterns	42	45.95	41.50
853-B516	B516	F	T/SSOP 14, 16, 20, 28 (.65mm pin pitch) to DIP	54	45.95	41.50
853-B517	B517	G	T/SSOP 48 (.4, .5, .65mm pin pitches) to DIP	18	45.95	41.50
853-B507	B507	G	T/SSOP 16, 20, 32, 40, (.4, .5, .65mm pitches) for prototyping, 40 patterns	20	45.95	41.50
853-B513	B513	H	MSOP8/10, TSOP8, SOT 23/26, SOT323/363, 143, SC70/90	150	45.95	41.50
853-B508	B508	I	Dual rows of 48 pads, pitches: .4, .5, .65, .8, 1, 1.5, 2mm 30, 70 mil	10	45.95	41.50
853-B503	B503	J	SOIC, QSOP, TSOP, T/SSOP patterns for prototyping, 34 patterns	17	45.95	41.50
853-B502	B502	K	SOT-, TO-, SC-, MSOP, TSOP, SOIC, DPAK, 160 SMT patterns	70	45.95	41.50

BELLIN DYNAMIC SYSTEMS SMT ADAPTER BOARDS FOR SOIC PADS

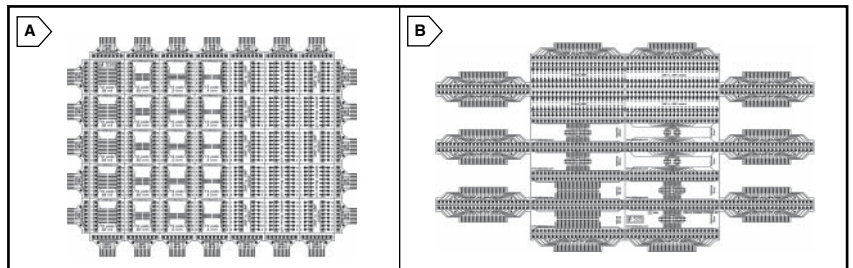
Specifications:

- T/SSOP patterns include .4/.5/.65mm pin pitches, SOIC=.050" pin pitch, DIP=.100" pin pitch in either .300" or .600" widths

Full scale data sheets available at mouser.com/bellin



Convert SOIC pads on existing PCB's to: MSOP, SSOP, TSOP, TSSOP .4/.5/.65mm, SOIC or DIP .300"/.600". Remap pins, convert to DIP socket, other uses. Use with .100" spacing pin strip headers, such as Mouser Stock No. 571-41031850 (40p straight) and Mouser Stock No. 571-41029780 (40p right angle).



For quantities of 50 and up, call for quote.

MOUSER STOCK NO.	Bellin Dynamic Part No.	Fig.	Description	No. of SOIC Adapters	Price Each	
					1	10
853-CC-8	CC-8	A	SOIC8 to: TSOP8, MSOP8, DIP or SOIC (for pin remap)	22	51.95	47.50
853-CC-14	CC-14	A	SOIC14 to: TSOP, MSOP, DIP or SOIC (for pin remap)	12	51.95	47.50
853-CC-16	CC-16	A	SOIC16 to: TSOP, MSOP, DIP or SOIC (for pin remap)	12	51.95	47.50
853-CC-24	CC-24	B	SOIC24 to: TSOP, MSOP, DIP or SOIC (for pin remap)	10	51.95	47.50
853-CC-28	CC-28	B	SOIC28 to: TSOP, MSOP, DIP or SOIC (for pin remap)	10	51.95	47.50
853-CC-32	CC-32	B	SOIC32 to: TSOP, MSOP, DIP or SOIC (for pin remap)	10	51.95	47.50
853-CC-40	CC-40	B	SOIC40 to: TSOP, MSOP, DIP or SOIC (for pin remap)	10	51.95	47.50
853-CC-48	CC-48	B	SOIC48 to: TSOP, MSOP, DIP or SOIC (for pin remap)	8	51.95	47.50

NEW SUPPLIER

NEW SUPPLIER

NEW SUPPLIER

Bellin Dynamic Systems

Prototyping

NEW SUPPLIER

NEW SUPPLIER

NEW SUPPLIER

Bellin Dynamic Systems

Prototyping