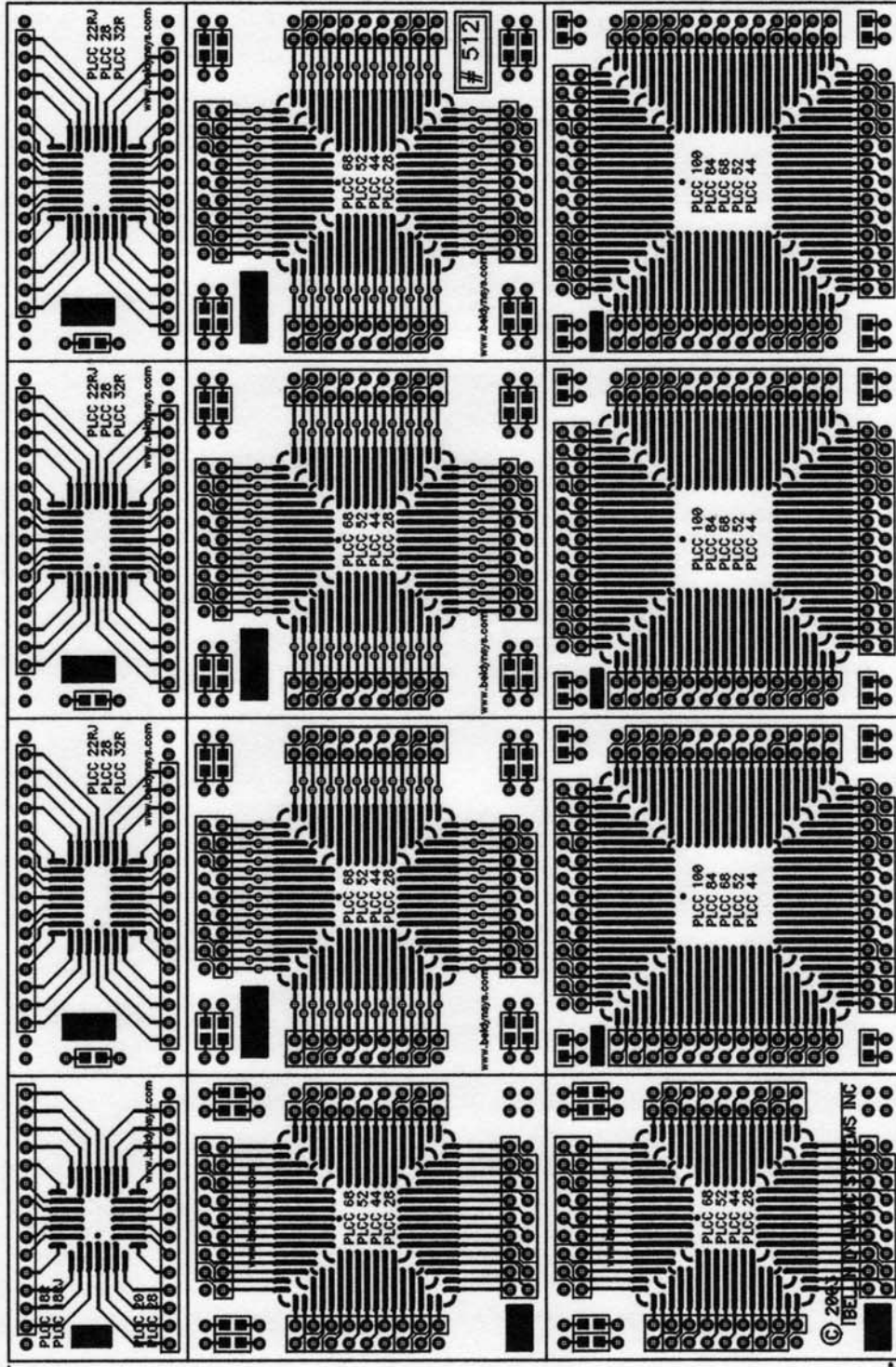


front side board thickness 0.031" all 0.070" pads have 0.050" plated through holes on 0.100" grid
 print 1:1 to fit check components lines between adapters grooved for easy snap-apart by hand

5.000"



0.000"

7.600"

Belin Dynamic Systems Inc 211 South State College #319, Anaheim California 92806	
Tolerances: .XX = +/- .03" .XXX = +/- .010"	Title Board, PLCC PATTERNS
Size A	Part #: 512
Drawn: P Bellin	Doc #: 20162.PCB
Check: P Bellin	Part Rev: None
	Sheet 1 Of 1

© 2003
 BELIN DYNAMIC SYSTEMS INC

